

Chemung County Executive's Advisory Commission on Natural Energy Solutions

Thomas Santulli-Chemung County Executive
Co chairs: Andy Fagan, Mark Watts
Coordinator-Jennifer Trimmer



Purpose

“To address public sector impacts and opportunities related to natural energy solutions in Chemung County”

Our purpose is “NOT” to be an advocate for any particular energy solution



Goals of the Commission

1. Identify impacts/issues/opportunities associated with the development and production of energy
2. For each impact/issue/opportunity Commission will create a stakeholder subcommittee which will investigate, research, and provide alternatives and recommendations back to the County Executive

Membership

- Chemung County Planning-Randy Olthof
- Chemung County Health Department-Thomas Kump
- Chemung County Legislature-Richard Gunderman (will remain an ad hoc member – New appt. forthcoming)
- Chemung County Soil and Water Conservation District-Mark Watts-(co chair)
- Cornell Cooperative Extension of Chemung County-Andy Fagan (co chair)
- Chemung County Farm Bureau-Ashur Terwilliger
- Chemung County Emergency Management-Mike Smith

Membership_{continued}

- Rural Association of Mayors & Supervisors-George Richter
- Chemung County Environmental Management Council-Lee Hanle Younge
- Water Quality Committee-Gene Stow
- Chamber of Commerce-Kevin Keeley
- Member(s) at large-David Shafer, William Benedict, Donald Kraft

Membership continued

- Law Enforcement-Christopher Moss and Captain Thomas Argetsinger
- Department of Public Works-Andy Avery
- Town Highway Departments-Roger Burlew
- Chemung County Public Information-Karen Miner
- Chemung County Storm Water-Jimmie Joe Carl
- Coordinator-Jennifer Trimmer (Chemung County Environmental Management Council)

Commission Subcommittees and Chairs

**Business
Opportunities**
Kevin Keeley

**Environmental
Impacts**
Jimmie Joe Carl

**Information,
Outreach & Education**
Karen Miner and Andy
Fagan

**Roads &
Infrastructure**
Roger Burlew and
Andy Avery

Water Quality
Tom Kump

Law Enforcement
Captain Argetsinger

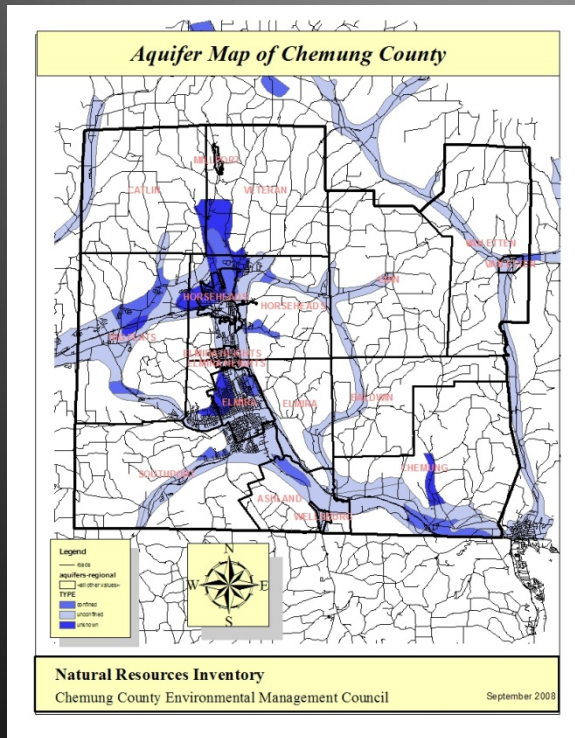
**Workforce
Development**
Dan Porter

Public Safety
Mike Smith

**Planning & Local
Zoning**
Randy Olthof



Research
Evaluate
Verify
Anticipate
Minimize
Mitigate
Educate



Business Opportunities

Kevin Keeley

Representatives of regional Business and Professional organizations have been collaborating to determine how the Chemung County economy, entrepreneurs, and quality of life can benefit from the Marcellus Shale natural gas play.

Recent Activity:

- Toured drilling rig and field office in Towanda, PA.
- Hosted development workshop with Bradford, PA, *Progress Authority*.
- Hosted impact session with Williamsport Chamber staff.
- Consulted local entrepreneurs who have captured drilling industry.
- Attended public hearings of local, state, and federal agencies.
- Began study of drilling impacts on business and peripheral interests.

Next Steps:

- Develop delegation visit to a gas play such as the Barnett Shale in Texas.
- Address the malaise of business interest caused by the NYS moratorium.



Environmental Impacts Committee

Jimmie Joe Carl

- Tough Committee
- Many, many issues
 - ☐Drill cuttings
 - ☐Methane and or Gas Migration
 - ☐Chemicals Involved
 - ☐Produced water treatment
 - ☐Hydro-fracking water treatment

Environmental Impacts Continued

- Air quality
- Water quality
- Erosion & sediment control
- NORM
- RADON
- Housekeeping at well sites



Number of visits to Pa. and attended numerous seminars

- Spoke with landowners in Pa.
- Spoke with DEP staff in Pa.
- Visited well pad in Pa.
- Biggest issue is trying to obtain objective information
- Technology changes on a daily basis

Where are we today?

Breakdown the issues and have a
sub-committee member research
the issue to find good data

Examples:

- someone is trying to compare new PA regulations vs. NY regulations
- Radioactivity, (Alpha, Gamma, Beta)



[Home](#) [Welcome](#) [Departments](#) [Employment](#) [Online Forms](#) [FAQ's](#) [Links](#)

[Home](#)
[Commission Membership](#)
[Meeting Minutes and
Presentations](#)
[Sub-Committees](#)
[Legislative Activity](#)
[Media Releases](#)
[Maps](#)
[Natural Resource
Inventory](#)
[Links and Resources](#)

The Chemung County Executive's Office acknowledges that the impacts and opportunities related to energy issues, such as natural gas and wind power development, need a more focused and coordinated approach in order to ensure our communities interests are considered by the various stakeholders involved.

Recognizing the potential of significant production of energy in Chemung County from natural gas, wind, and other sources; County Executive Tom Santulli has formed the ***Chemung County Executive's Advisory Commission on Natural Energy Solutions*** to better coordinate and streamline information in relationship to the wide array of public sector impacts and opportunities, including those in; business, education, environment, planning, public safety, infrastructure, and workforce development, in order to minimize negative impacts, while maximizing benefits for the general public.

Click [here](#) to view the Commission's Operating Guidelines.

 **Contact Information:** Jennifer Trimber, Advisory Commission Staff
Address: 600 Milton Street
Elmira, NY 14904
Phone: (607) 271-9284
Email: emc@co.chemung.ny.us



Information, Outreach, & Education Karen Miner & Andy Fagan

- Charged with providing accurate information
- Website launched 09/09/10 and includes information on the activities of the Commission, Links and Resources covering Energy topics, as well as NYS Legislative Activity

www.chemungenergysolutions.com

Roads & Infrastructure

Roger Burlew & Andy Avery

- Very active committee
- Presentations by:
 - Hunt Engineers
 - Delta Engineers
 - Chesapeake Energy
 - Talisman-Invited but declined

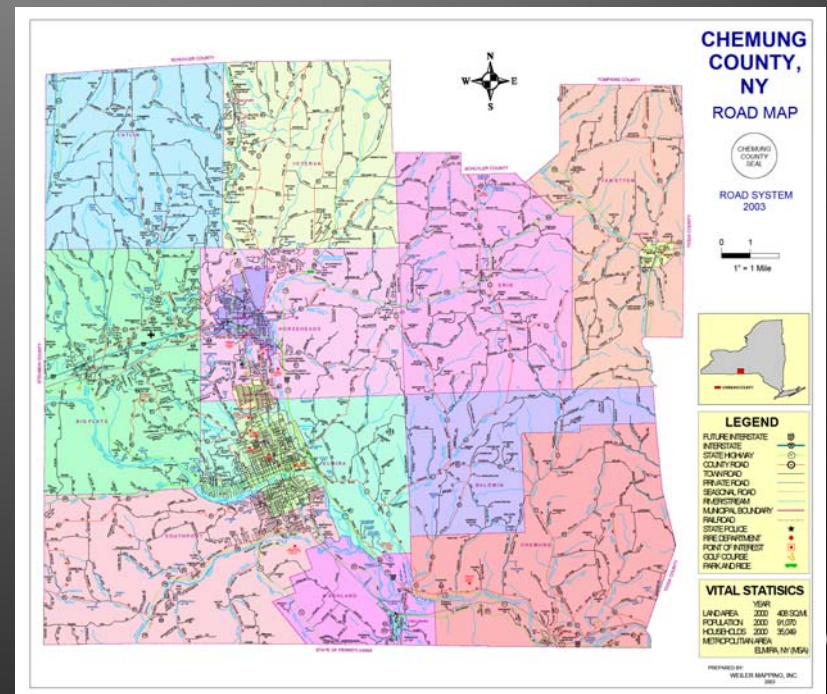
Initiated a Pilot Project With Delta Engineering

- Town of Southport paid \$8,500
- Gives other municipalities the ability to observe and consider the program
- Provide opportunities to make changes if everyone likes the initial process



Primary recommendations are:

- Countywide permit system
- One stop coordination



Water Quality

Tom Kump

- Elected to wait until the DEC draft GEIS is out.
- Watching Pa., we do know that things are changing such as have increased the distance the drilling company does well testing
- Very intensive testing



Laboratory

- Checking for methane within the well prior to drilling
- Provide fact sheets
- Third party pulls samples
- Still recommend homeowners do their own test

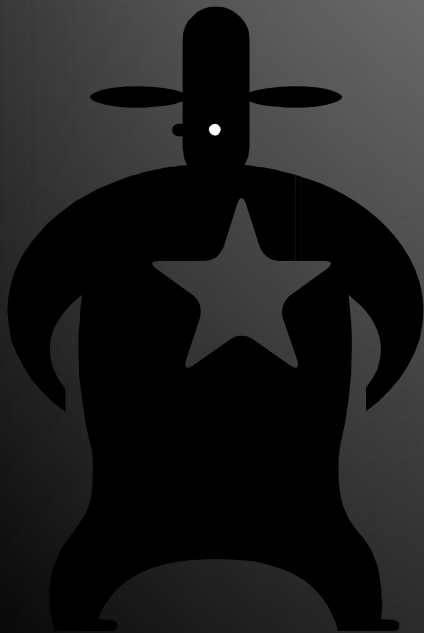
Law Enforcement

Captain Thomas Argetsinger

- Committee of one
- 100% Attendance at his committee meetings
- Usually unanimous decisions



- Provides great insight to other committees (ex. Roads)
- Constant communication with counterparts in Pennsylvania
- Sheriff's Office has deputy who can now inspect all commercial vehicles



Workforce Development

Dan Porter

CSS Workforce New York, representatives of regional Labor, Education, Training and Economic Development agencies collaborate to determine how Chemung County can best accommodate the workforce demands and opportunities inherent in harvesting the Marcellus Shale natural gas play.



Schlumberger



Five Questions Asked of Gas Drilling Industry:

- How many employees do you have here now?
- Can you summarize the jobs and skills needed?
- How much and how soon might local workforce needs grow?
- How long might local peak employment levels last?
- What other local workforce needs may arise?

Activity:

- Conducted consultations with gas drilling industry.
- Produced workshop with gas drilling related employers.
- Promoted committee member tours of drilling rig sites.
- Hosted briefing by Commission Co-Chair Andy Fagan:
*Assessing Job Opportunities in the
Natural Gas Industry*
- Conducted needs analysis meetings
with Northern Tier.



Public Safety Committee

Mike Smith

Concerns:

- Increase in crime
- Increase in traffic
- Increase in big truck traffic
- Transportation of chemicals
- Increased number of EMS calls
- Accidents at well sites



Research Accomplished

- Elmira Fire Dept. visited drill sites in Lycoming County
- Reviewed video on four rescue scenarios
- Companies seem willing to share information
- Drilling Companies have their own emergency plans
- Fire Dept. seems comfortable that they will be able to handle the emergencies that may arise

Possible Recommendations

- Each drill site have 911 address
- Specialized training for Fire Depts.
ex: heavy vehicle rescue
high angle rope rescue
- Purchase of equipment & training provided by Energy Companies
- Good communication with Energy Companies



Planning & Zoning

Randy Olthof

Concerns:

- Housing availability
- Increase in truck & rail traffic
- How to plan for growth
- Protection of historical, as well as natural resource areas
- Food and shelter costs could increase



*Possible need for a study

Concerns Continued:

- Define uses such as storage yards
- How are they to be permitted
- Common definition used in County
- Work with companies ahead of time to set up locations
- How is zoning in contiguous areas compared with Chemung County

Common themes from all sub-committees

- Try to have one stop shop
- Consistency throughout the County
- Communication, communication, communication
- Be paid for by Energy Company
- Hope DEC finalizes good regulations
- Staff the DEC to oversee the regulations