



# Drought Status Briefing for Central New York

*Jim Brewster, Service Hydrologist  
National Weather Service  
Binghamton, NY*

*August 4, 2016*



*This outlook is prepared only for the WFO Binghamton Service Area.*



# Recent Precipitation

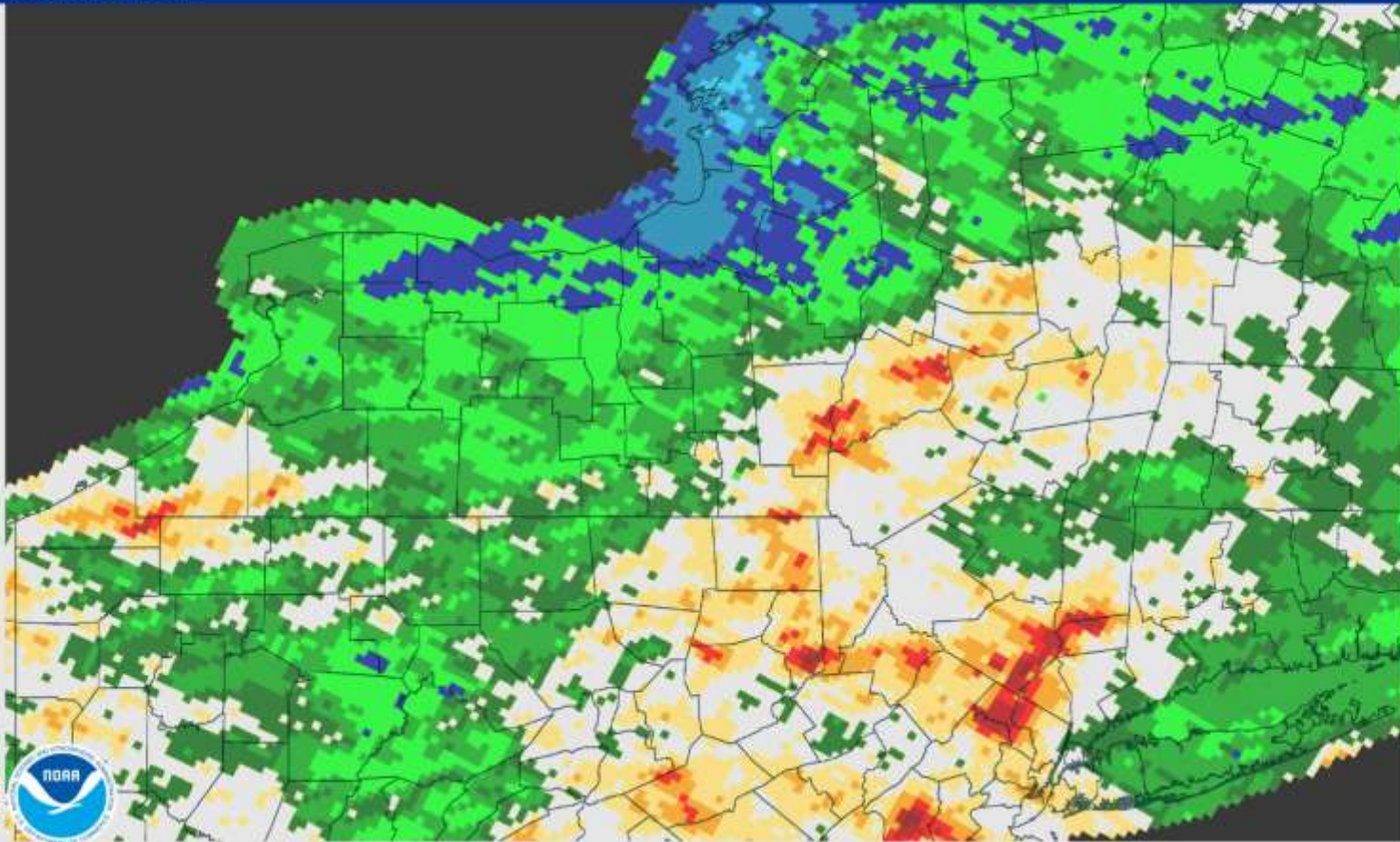
Past 2 weeks



August 04, 2016 14-Day Observed Precipitation

Created on: August 04, 2016 - 13:58 UTC

Valid on: August 04, 2016 12:00 UTC



Severe drought areas of western and central NY received the least amount of rain. Some relief over eastern areas.



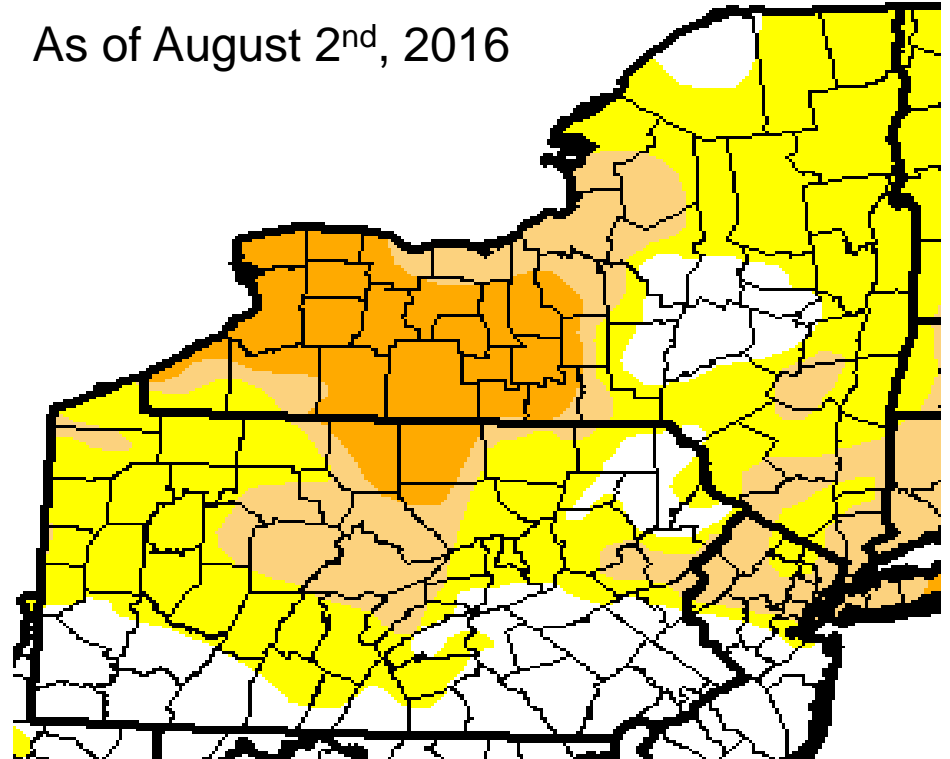
# U.S. Drought Monitor (USDM)

**Severe Drought in  
Finger Lakes/Central  
Southern Tier (orange).**

**Abnormally dry (yellow)  
to Moderate Drought  
(tan) conditions for  
much of the rest of area.**

**Spotty areas with no  
drought class where  
precipitation is normal,  
or above normal (white).**

As of August 2<sup>nd</sup>, 2016



Intensity:

 D0 (Abnormally Dry)

 D2 (Severe Drought)

 D4 (Exceptional Drought)

 D1 (Moderate Drought)

 D3 (Extreme Drought)

Drought classification trimmed slightly east of I-81.



# What Does The Drought Monitor Mean?

## Possible Impacts of Severe Drought according to USDM.

- Crop, or pasture losses likely.
- Water shortages become common.
- Water restrictions imposed.

## Possible impacts of Moderate Drought according to USDM.

- Some damage to crops and pasture lands.
- Streams/reservoirs, or wells low. Some water shortages developing, or imminent.
- Voluntary water restrictions may be needed.



# State Declarations vs. USDM

The U.S. Drought Monitor (USDM) is the 'best analysis of current and future conditions' based on input from multiple agencies and stakeholders after considering a wide spectrum of indices and potential impacts.

A state's drought status is a 'call to action' based on the state's assessment of what actions its residents and water users should be taking. The USDM is a key component in this decision making process.

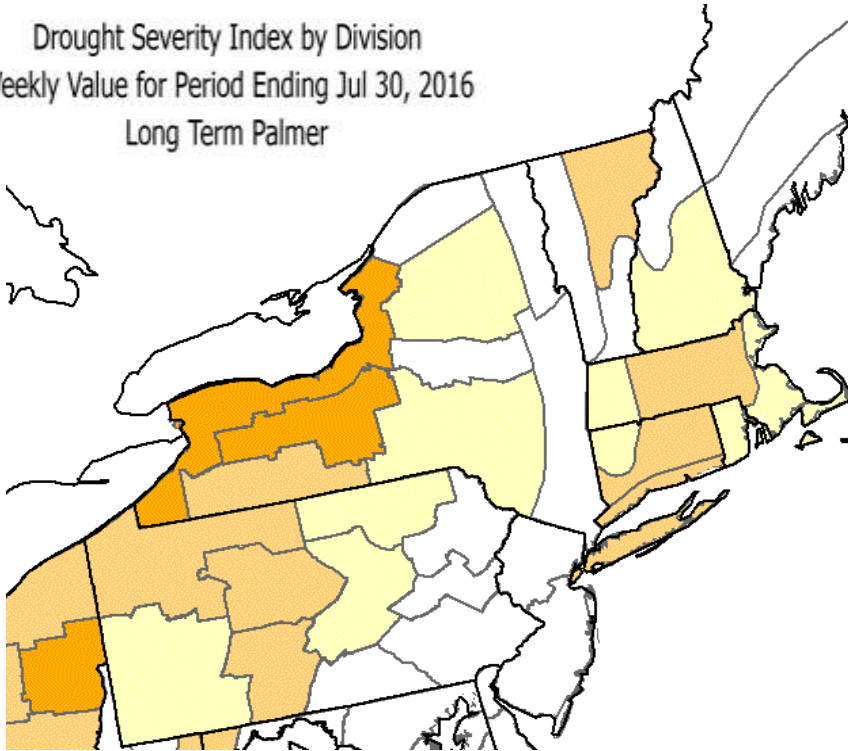


<http://www.dec.ny.gov/lands/5011.html>

<http://www.dep.pa.gov/Business/Water/Planning/Conservation/Drought/Pages/default.aspx>

# Assessing the Drought

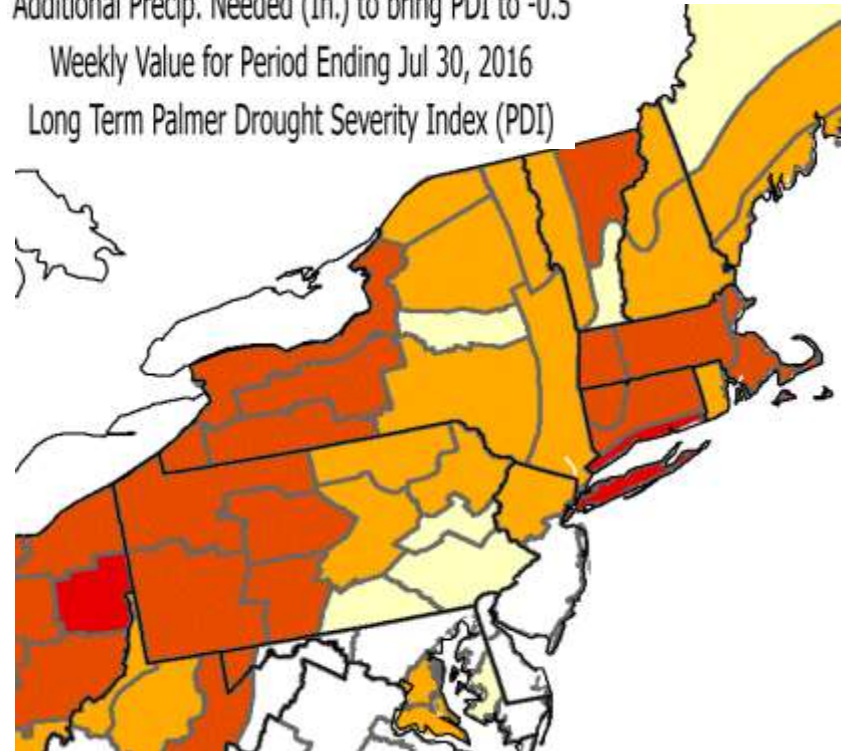
Drought Severity Index by Division  
Weekly Value for Period Ending Jul 30, 2016  
Long Term Palmer



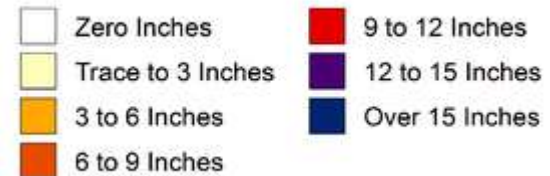
Long Term Palmer Drought Index (PDI) suggests Severe Drought west half; Moderate Drought east.



Additional Precip. Needed (In.) to bring PDI to -0.5  
Weekly Value for Period Ending Jul 30, 2016  
Long Term Palmer Drought Severity Index (PDI)



We need about **4 to 8 extra** inches of rainfall to alleviate much of the drought impact.

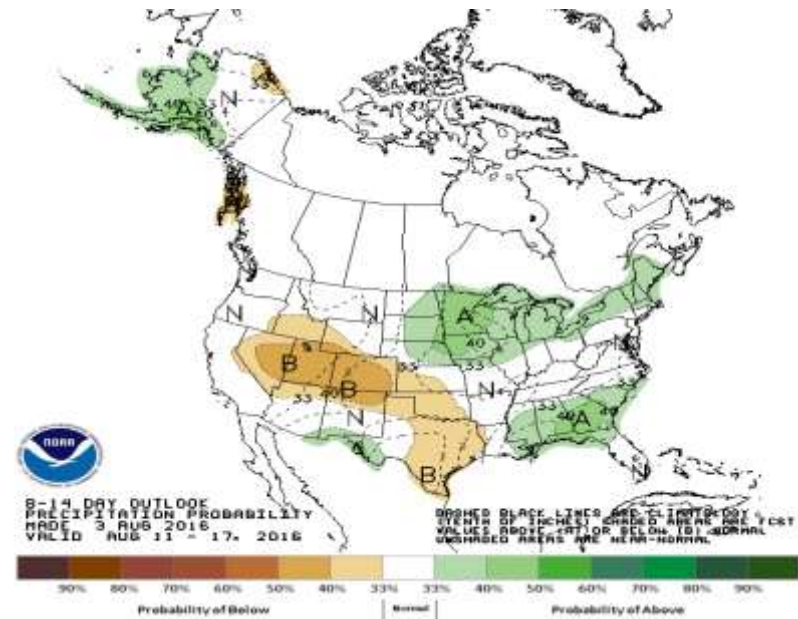
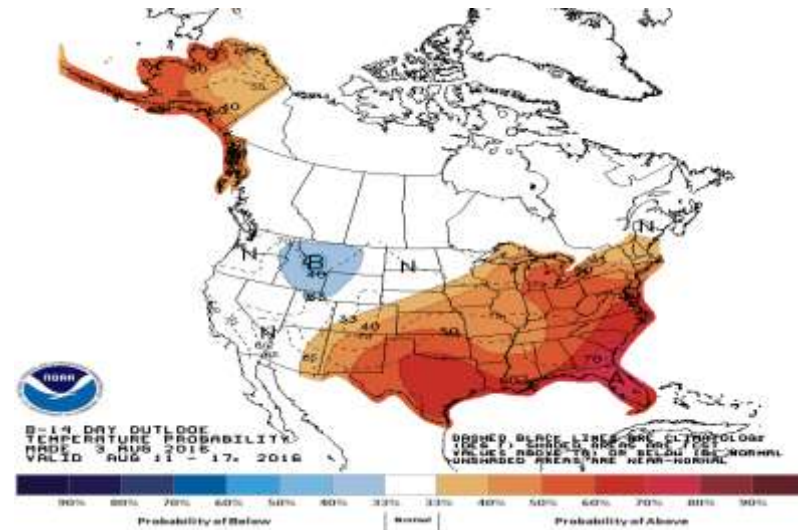
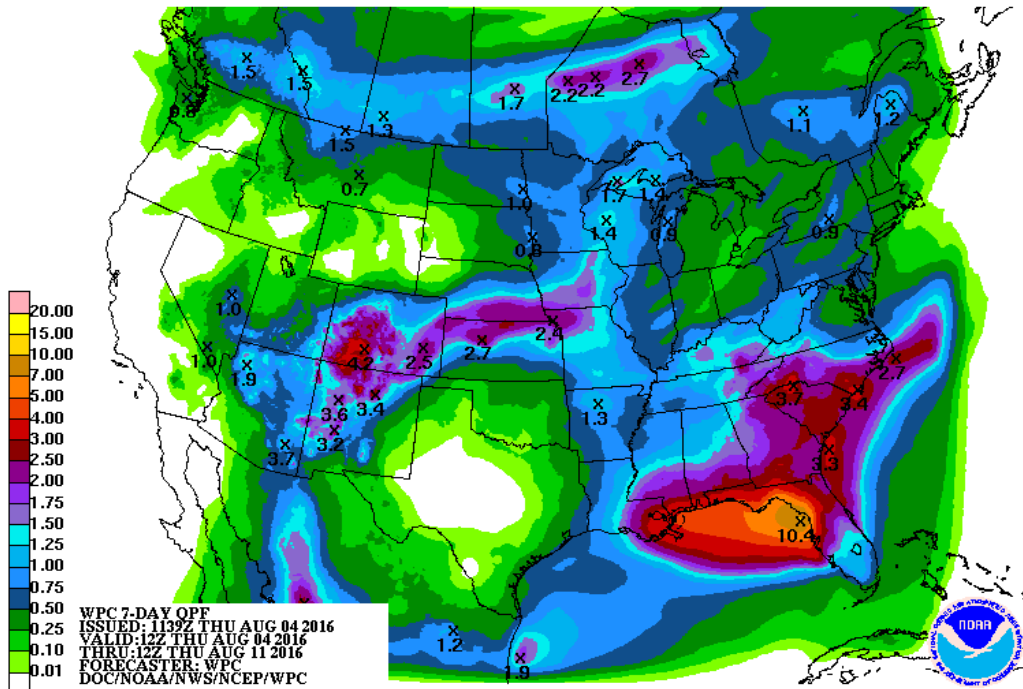




# Rainfall Next 2 Weeks

Rainfall forecast for the next 7 days (below) indicates generally less than 1 inch of rain across the area.

Forecasts for the following week suggest warmer than average temperatures with a slight indication that rainfall will be above average. (right images)

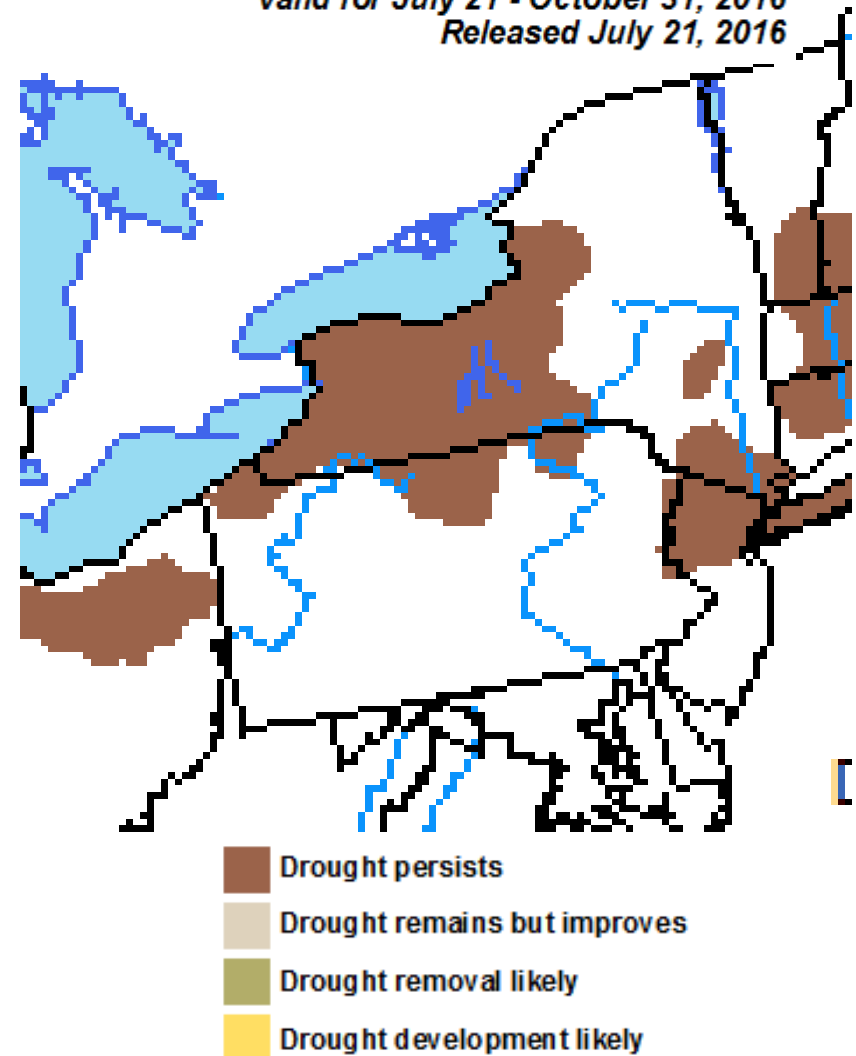




# Drought Outlook

- **No major weather pattern change expected into early September.**
- **Warmer than normal temperatures mean better chance for evaporation and continued drying.**
- **Rain will occur at times, but summer precipitation is spotty and insufficient to alleviate drought over a large area.**
- **Need steady soaking rainfall, or tropical system, to bring relief.**
- **Right now, the trends support persistent drought.**

*Valid for July 21 - October 31, 2016  
Released July 21, 2016*







# Current and Future Drought Impacts

- Crop distress, or failure continues. Alternate water sources may be needed.
- Brushfire risk is higher than a typical summer due to dried out fuels.
- Residential and commercial water restrictions may be imposed in hardest hit areas.
- Economic complications to agri-business, or water sensitive industry is possible.



# Additional Resources

- U.S. Drought Monitor: <http://droughtmonitor.unl.edu>
- U.S. Drought Portal: <http://drought.gov>
- Climate Prediction Center (CPC) <http://www.cpc.ncep.noaa.gov>
- Northeast Regional Climate Center: <http://www.nrcc.cornell.edu>
- USDA Crop Progress and Conditions: <http://www.nass.usda.gov>
  
- ADDITIONAL RIVER INFORMATION
- National Weather Service: <http://water.weather.gov>
- U.S. Geological Survey: <http://water.usgs.gov>
- U.S. Army Corps of Engineers: <http://www.usace.army.mil>